

# BLE85

## Performance data

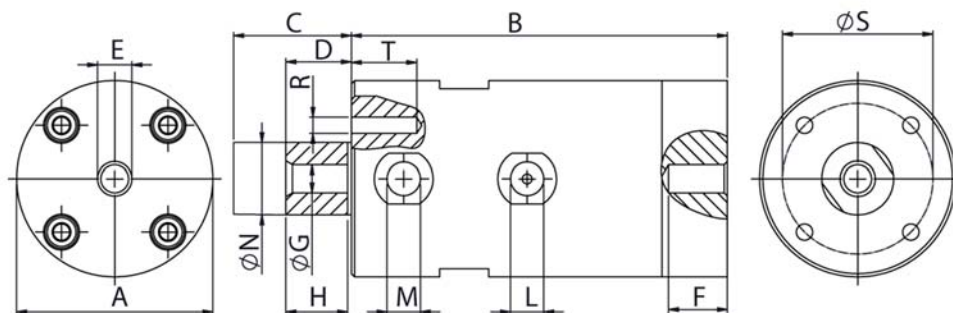
- Operating temperatures -20°C bis 200°C
- Start-up possible in any position
- Maintenance-free, oil-free operation possible (lubrication increases service life)
- Outward swinging piston with mounting option
- Vibration frequency and force are adjusted via the operating pressure
- Noise level below 80 dB(A)



Typ	Vibration frequency [1/min]			Force [N]			Working torque [kg*cm]			Air consumption [l/min]		
	2 bar	4 bar	6 bar	2 bar	4 bar	6 bar	2 bar	4 bar	6 bar	2 bar	4 bar	6 bar
BLE85	1.680	1.980	2.280	983	1.593	2.113	6,36	7,42	7,42	240	390	580

Table 1: Performance data

## Dimensions



Typ	A	B	C	D	E	F	G	H	I	L	M	N	O	P	Q	R	S	T	Weight
	mm	mm	mm	mm		mm		mm	mm			mm	mm	mm	mm		mm	mm	[kg]
BLE85	160	122	52	22	M20	30	M20	30		3/8"	2 x 3/8"	85				M6	17	140	16,5

Table 2: Dimensions