

BLE40

Performance data

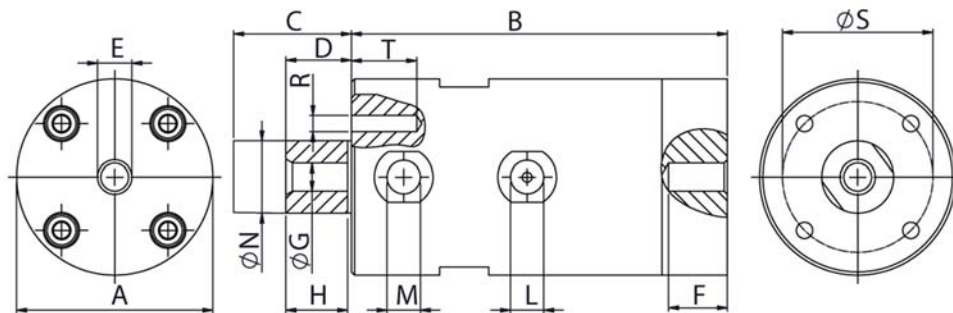
- Operating temperatures -20°C bis 200°C
- Start-up possible in any position
- Maintenance-free, oil-free operation possible (lubrication increases service life)
- Outward swinging piston with mounting option
- Vibration frequency and force are adjusted via the operating pressure
- Noise level below 80 dB(A)



Typ	Vibration frequency [1/min]			Force [N]			Working torque [kg*cm]			Air consumption [l/min]		
	2 bar	4 bar	6 bar	2 bar	4 bar	6 bar	2 bar	4 bar	6 bar	2 bar	4 bar	6 bar
BLE40	1.380	1.560	1.740	205	332	413	1,96	2,49	2,49	80	190	320

Table 1: Performance data

Dimensions



Typ	A	B	C	D	E	F	G	H	I	L	M	N	O	P	Q	R	S	T	Weight
	mm	mm	mm	mm		mm		mm	mm			mm	mm	mm	mm		mm	mm	[kg]
BLE40	85	140	57	13	M16	17	M16	20	36	1/4"	3/8"	40	20		65	M6	16	65	5,7

Table 2: Dimensions